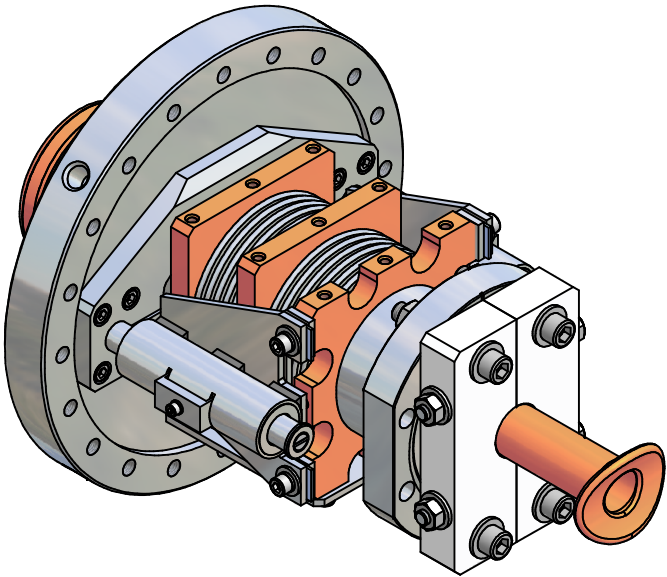
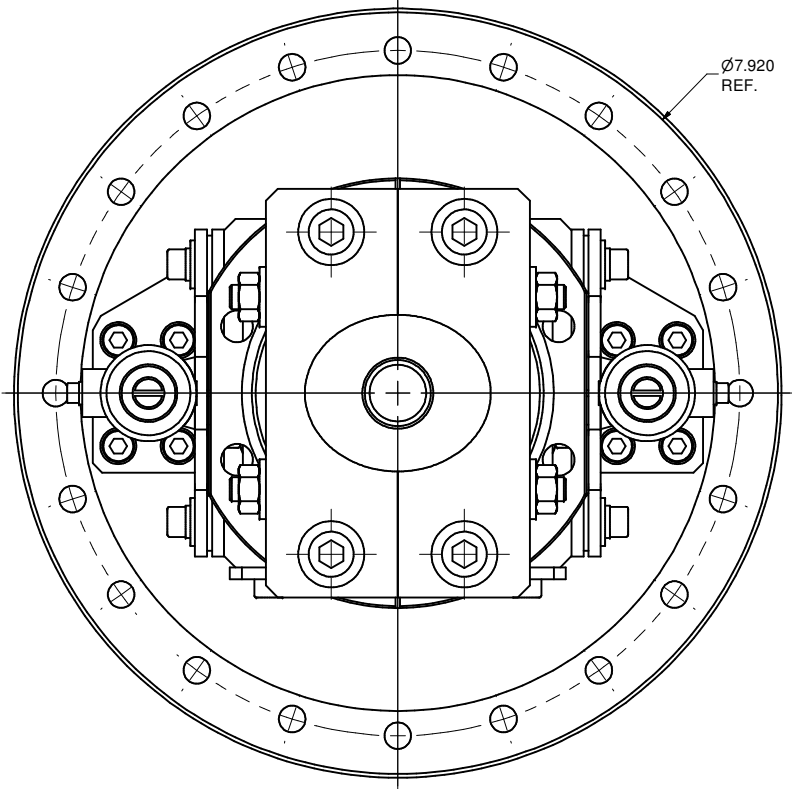
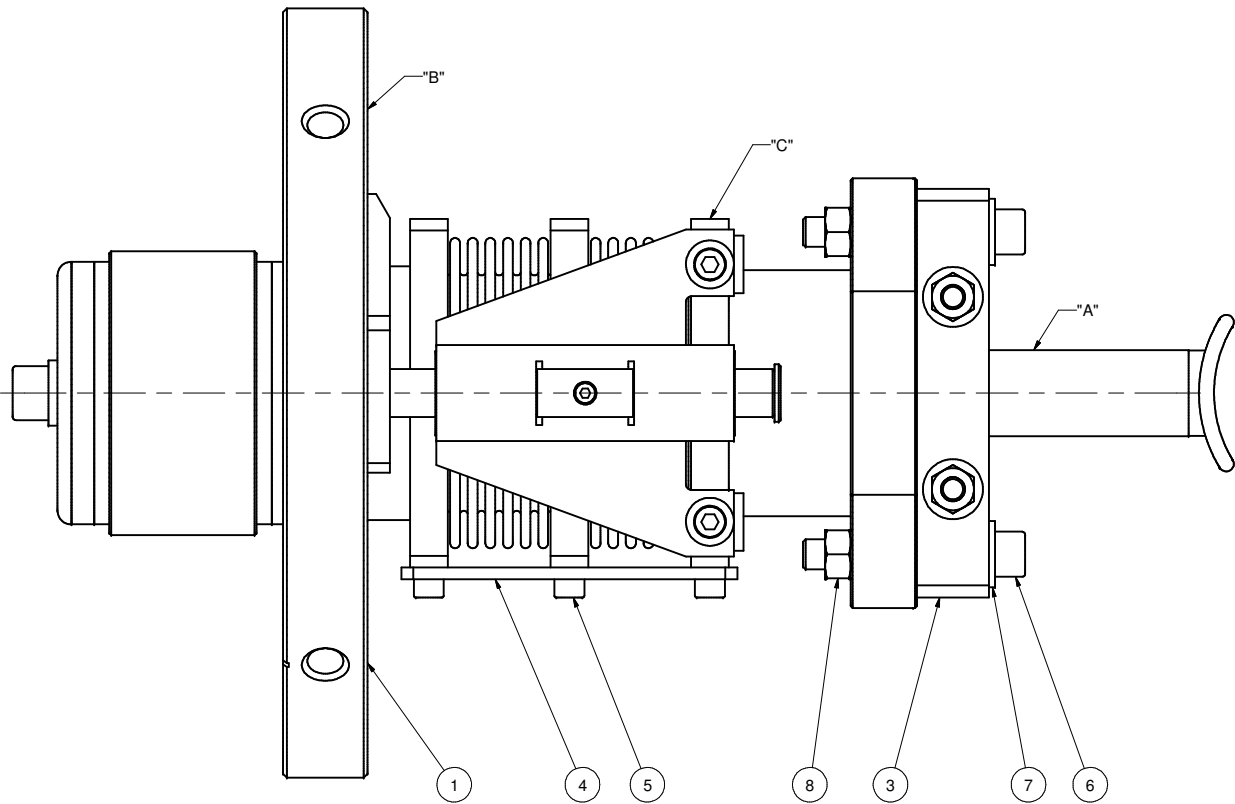


REVISIONS				
SYM.	ZONE	DESCRIPTION	DATE	APP.
C		Issued all design changes as Rev C (TIO)	4/19/07	SAB



SCALE 1 : 1.5

- NOTES:
- STEP 1: INSTALL FIXING PLATE (4) ON COLD ASSEMBLY (1)
  - STEP 2: FIX COLD INNER TUBE "A" IN CENTRAL POSITION WITH ALIGNING PLATE (3).
  - STEP 3: INSTALL LINEAR GUIDE ASSEMBLY (2) ON FLANGE "B". FIX BRACKETS ON HEAT SINK I "C". USE SHIMS SET "D" TO FILL GAP BETWEEN BRACKET AND HEAT SINK I.
  - STEP 4: REMOVE PARTS ITEM 3 THRU 8.

8	-	5/16-24Hex Nut	4					C
7	-	5/16 Washer	4					C
6	-	5/16-24 x 2 Socket Hd. Cap Screw	4					C
5	-	10-32 x 3/8 Socket Hd. Cap Screw	6					C
4	100.470.001	FIXING PLATE	1					C
3	100.471.000	ALIGNING PLATE SUBASM	1					C
2	100.400.000	LINEAR GUIDE	1					C
1	100.300.000	COLD ASSEMBLY	1					C

		ITEM	DWG. NO.	DESCRIPTION	G1	G2	G3	REMARKS	REV.
					QUANTITY				
D	PRINT DISTR.	PLOT DATE: 4/19/2007 CAD FILE NAME: 100-470-000.idw							
100-470-000 REV. 1 OF 1		UNLESS OTHERWISE SPECIFIED:  DIMENSIONS ARE IN INCHES: TOLERANCES ON: .00 ± .010 .000 ± .005 FRACTIONS ± 1/64 ANGLES ± 0.5° ALL SURFACES			CORNELL UNIVERSITY FLOYD R. NEWMAN LABORATORY ITHACA, NY 14853				
					75 kW CW INPUT COUPLER LINEAR GUIDE INSTALLATION				
		CHECKED BY: VGV APPROVED BY: SAB			DRAWN BY: VM DRAWN FOR: SAB		DATE: 1/26/2006	SCALE: 1:1	D